

# CONTRIBUTION OF DERMOSCOPY IN THE DIAGNOSIS OF GENERALIZED PUSTULAR PSORIASIS

M. Mrad; H. Hammami; A. Chamli; S. Arfaoui; A. Zaouak; S. Fenniche  
Dermatology, Habib Thameur Hospital, Tunis, Tunisia

## Background

- **Dermoscopy of inflammatory diseases:** increasingly important+++
- Published data concerning dermoscopy of **generalized pustular psoriasis (GPP):** limited
- We proposed to study the dermoscopic aspects in GPP

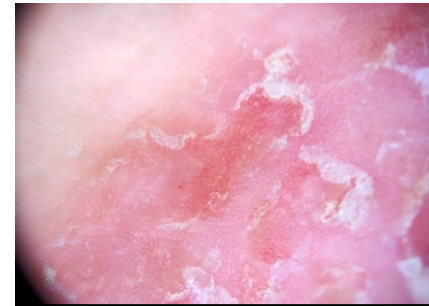
## Methods

- A retrospective study
- Conducted in the dermatology department of the Habib Thameur Hospital, Tunis, Tunisia.
- **5 patients** with GPP were included
- Examined with a dermoscope (DermLite® DL4, × 10).

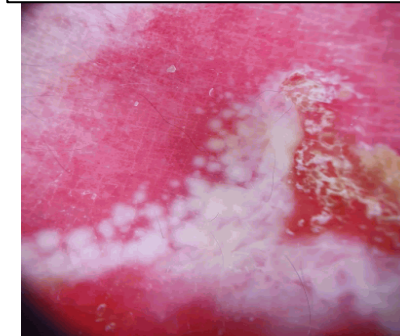


## Results

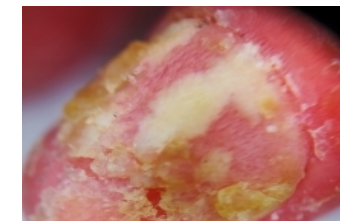
- All patients : **female** - 3 adults : 29,30 and 50 years old / 2 girls aged 10 and 14 years old.
- Dermoscopy of GPP :
  - **Flattened white globules** : all cases → coalescent on large plaques : 3 cases.
  - **Red dots and globules** diffusely distributed on **erythematous background** :4 cases - Agglomerated globular vessels :one case.
  - **Large white milky areas** : 2 cases
  - **The background** :**deep red** in color- **a lighter pink background in Scaled areas**
  - **Scaling** : all cases - white and thin : 4 cases  
very thick patchy distributed : one case
  - **Nail involvement:** 2 cases :
    - onychia
    - white globule with a spindle-shape form
    - dotted vessels of the nail beds
    - Scales thick, moist and yellow
    - Hemorrhage with extravasation



Red dots and globules on erythematous background



deep red background / white globules /white milky areas



Anonychia/ spindle-shape pustule/ thick scales

## Discussion

GPP : a **severe acute dermatosis, rapid diagnosis** is required in order to start appropriate treatment  
Clinical presentation : **confused with acute generalized exanthematous pustulosis**, early stages++→ the value of dermoscopy to support the clinical diagnosis

In our study: **two main dermoscopic signs**  
**1-white globules** : correspond to superficial non-follicular pustules  
**2-evenly distributed dotted vessels:** correspond to dilated vessels in the dermal papillae.  
Nonspecific white or yellow scales are also observed.

**The vascular pattern in GPP:** similar to the vascular pattern in plaque psoriasis.  
**White globules and a darker background:** characteristics of GPP++  
→Dermoscopy seems to be helpful in diagnosis of GPP more studies with larger numbers of patients are needed to draw final conclusions

Authors have no conflict of interest